

ORGANIZATION CHART

The legal authority of the Holmdel Township Board of Education is to be transmitted through the Superintendent along specific paths from person to person as shown by organizational charts for the district, district departments and schools.

The lines of authority in the charts represent direction of authority and responsibility.

The Superintendent shall have the freedom to organize and reorganize lines of authority and to revise such charts, subject to Board approval of major changes in organization for principals, directors and central office administrators.

Source: Regular Board Meeting

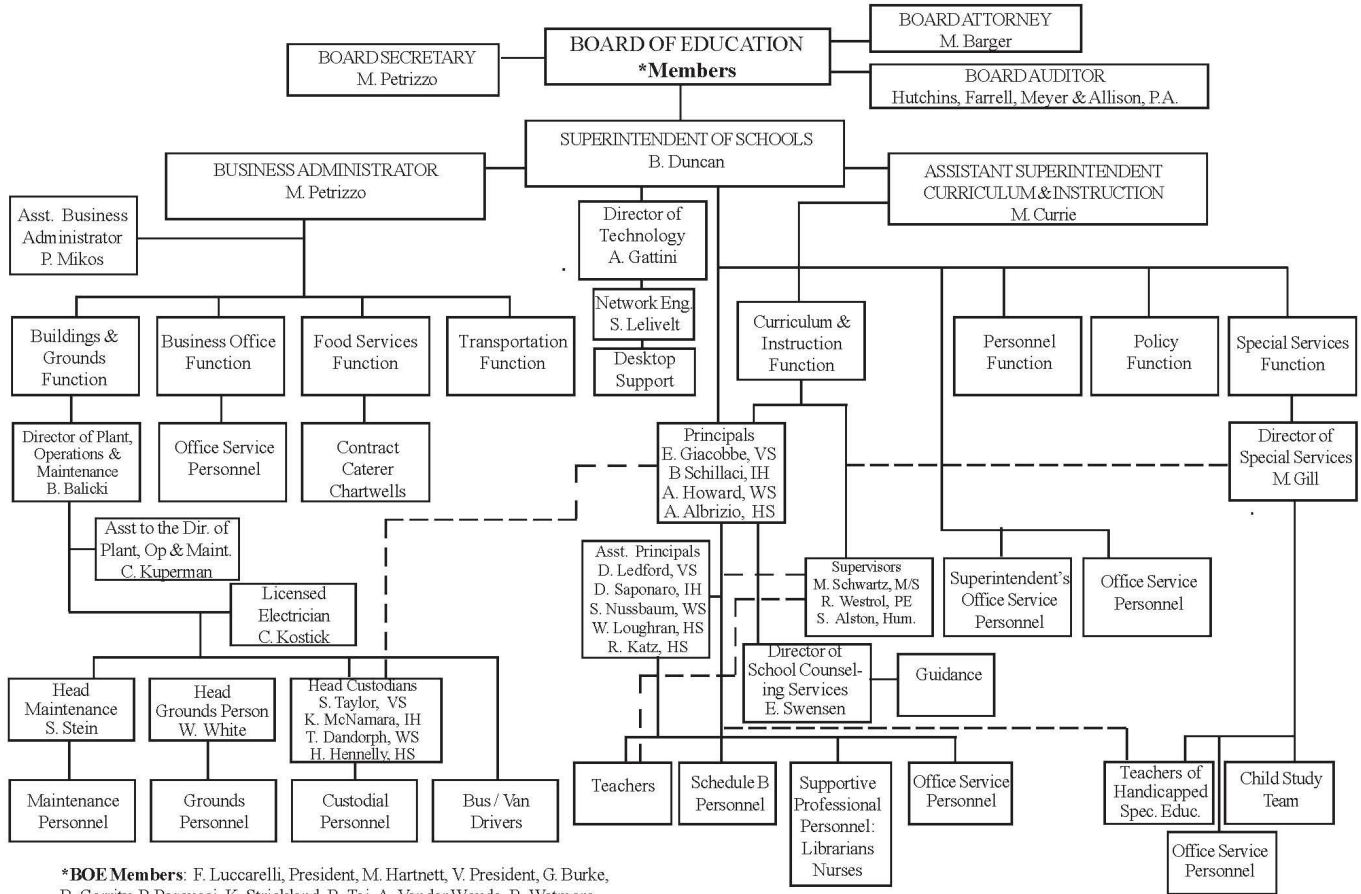
Date: August 20, 1986

Revised: July 19, 1995

Legal References:	<u>N.J.S.A.</u>	18A:7A-5	Major elements; guidelines
	<u>N.J.A.C.</u>	6:8-4.7	Administrative procedures
	<u>N.J.A.C.</u>	6:3-1.3	Chief school administrator



ORGANIZATION CHART



***BOE Members:** F. Luccarelli, President, M. Hartnett, V. President, G. Burke, B. Garrity, P. Pascucci, K. Strickland, R. Tai, A. Vander Woude, R. Wetmore

Board-approved: 7/25/07
Updated: 9/27/07